



**CAMLOCK**  
SYSTEMS

**PRODUCT SPECIFICATION**

Series 21 Cam Lock

# SERIES 21

**MICRO 8MM, ZINC ALLOY CAM LOCK.  
FIVE DISC TUMBLER MECHANISM**



## OVERVIEW

### Robust flat key lock with heavy duty keys

Designed for applications requiring a small, compact Disc Tumbler, The **Series 21** measures at only 8mm and offers 200 key combinations.

### Product features

- o Convenient double-entry keyway, meaning the key can be reversed
- o Ideally suited for compact applications with exterior security
- o Choice of 20mm or 30mm cam
- o Four way cam positioning possible

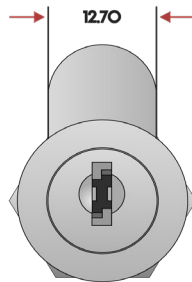
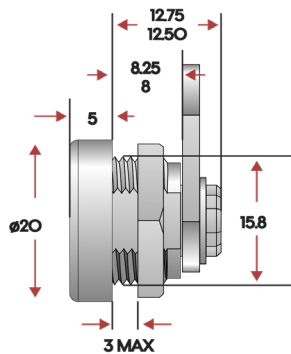
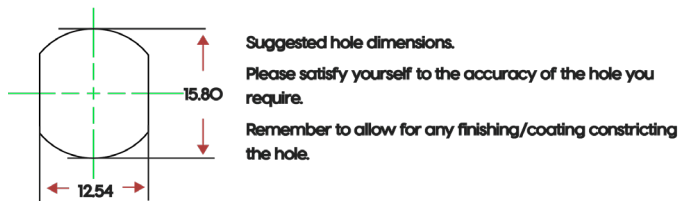
## TECHNICAL DATA

Number of key differs	200
Mechanism	Five Disc tumbler
Body material	Zinc alloy
Finish	Bright chrome plating
Patent protection	No
Key registration	No
Master keying	No
Key suite options	Keyed alike and keyed to differ
Body length	8mm
Fixing hole dimensions	13mm x 16mm
Lock fixing	Body nut
Key operations	90° turn clockwise and anti-clockwise. 180° free key

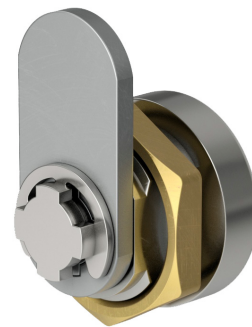
**SMARTER  
LOCKING**



## TECHNICAL DRAWINGS



## ADDITIONAL PRODUCT IMAGES



## KEY OPERATIONS



**Key movement: 1**  
Key starting position: 12 o'clock  
Key rotation: 90°  
Key ending position: 3 o'clock  
Key when unlocked: Trapped



**Key movement: 3**  
Key starting position: 12 o'clock  
Key rotation: 90°  
Key ending position: 3 o'clock  
Key when unlocked: Free



**Key movement: 2**  
Key starting position: 12 o'clock  
Key rotation: 90°  
Key ending position: 9 o'clock  
Key when unlocked: Trapped



**Key movement: 4**  
Key starting position: 12 o'clock  
Key rotation: 90°  
Key ending position: 9 o'clock  
Key when unlocked: Free



**Key movement: 5**  
Key starting position: 12 o'clock  
Key rotation: 180°  
Key ending position: 6 o'clock  
Key when unlocked: Free