



CAMLOCK
SYSTEMS

PRODUCT SPECIFICATION

Series 9 Cam Lock

SERIES 9

**ZINC ALLOY CAM LOCK
WITH A FIVE DISC
TUMBLER MECHANISM.**



OVERVIEW

Popular flat key Cam Lock

The **Series 9 Cam Lock** has a five Disc Tumbler mechanism offering 200 different key combinations. Manufactured from zinc alloy, the Series 9 has a stainless steel cap and the choice of a body nut or a horseshoe clip fixing. **Available in four body lengths: 11mm, 16mm, 23mm and 30mm body lengths.** A wide range of compatible cams are available to order.

Product features

- o High-quality zinc alloy body
- o Keyed to differ locks are supplied with two keys per lock

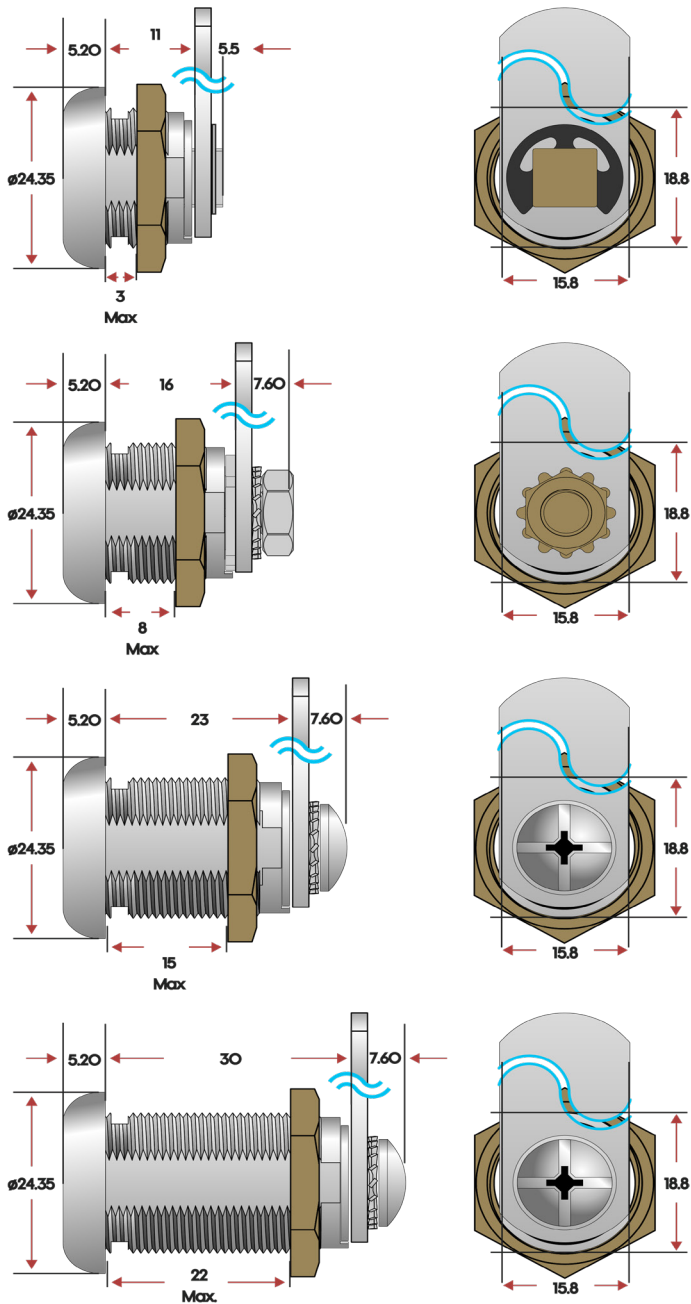
TECHNICAL DATA

Number of key differs	over 200
Mechanism	Five Disc Tumbler
Body material	Zinc alloy
Patent protection	No
Key registration	No
Master keying	No
Key suite options	Keyed alike and keyed to differ
Body length	11mm, 16mm, 23mm and 30mm
Fixing hole dimensions	Standard 19mm x 16mm double D punch
Lock fixing	Brass body nut or horseshoe clip (supplied)
Key operations	90° trapped and free, 180° free key

**SMARTER
LOCKING**



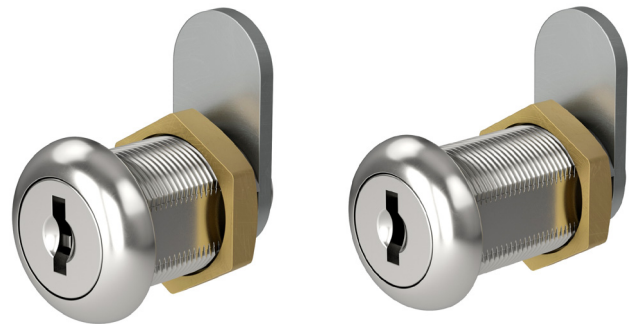
TECHNICAL DRAWINGS



ADDITIONAL PRODUCT IMAGES

23mm

30mm

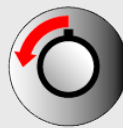


KEY OPERATIONS



Key movement: 1

Key starting position: 12 o'clock
 Key rotation: 90°
 Key ending position: 3 o'clock
 Key when unlocked: Trapped



Key movement: 2

Key starting position: 12 o'clock
 Key rotation: 90°
 Key ending position: 9 o'clock
 Key when unlocked: Trapped



Key movement: 4

Key starting position: 12 o'clock
 Key rotation: 90°
 Key ending position: 9 o'clock
 Key when unlocked: Free



Key movement: 3

Key starting position: 12 o'clock
 Key rotation: 90°
 Key ending position: 3 o'clock
 Key when unlocked: Free



Key movement: 5

Key starting position: 12 o'clock
 Key rotation: 180°
 Key ending position: 6 o'clock
 Key when unlocked: Free