



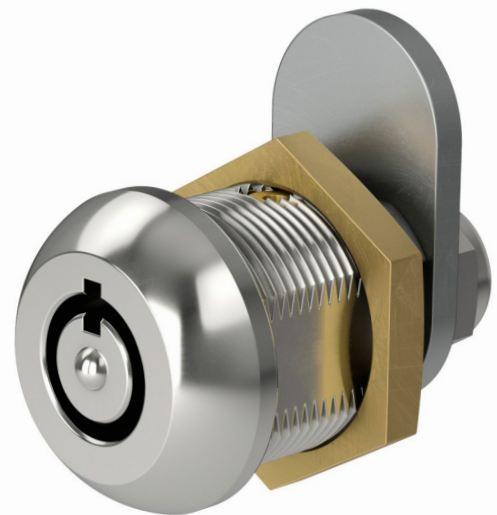
**CAMLOCK**  
SYSTEMS

**PRODUCT SPECIFICATION**

Series T Cam Lock

# SERIES T

**SOLID BRASS CAM LOCK  
WITH A 10-PIN, RADIAL PIN  
TUMBLER MECHANISM.**



## OVERVIEW

**High-security, 10-pin radial mechanism.**

A good option for those looking for a higher security radial pin tumbler mechanism than the traditional seven pins. The **Series T** also offers additional anti-manipulation features.

Available in 18mm, 25 and 30mm body lengths. A wide range of compatible cams are available to order alongside the Series T.

### Product features

- o Anti-grip radiused lock head
- o Anti-drill centre post to deflect attacks
- o Ideal for outdoor applications
- o Keyed to differ locks supplied with two keys per lock
- o Can cross suite wth other locks within the **Series T** family

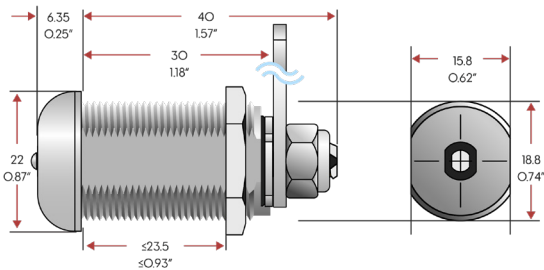
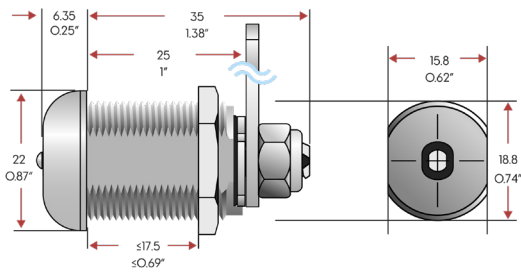
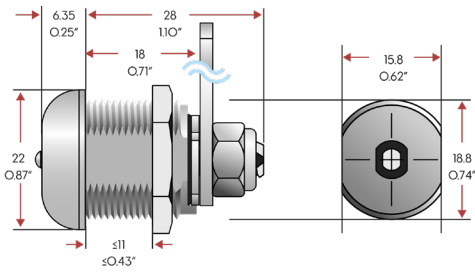
## TECHNICAL DATA

Number of key differs	Over five million
Protective features	Anti-drill centre post, anti-grip lock head
Mechanism	Radial pin tumbler
Body material	Solid brass
Finish	Polished chrome
Patent protection	No
Key registration	Yes
Cross suiting (within the T series)	Yes
Master keying	Yes - 25mm and 30mm only
Key suite options	Keyed alike and keyed to differ
Body length	18mm, 25mm, 30mm
Fixing hole dimensions	Standard 19mm x 16mm double D punch
Lock fixing	Brass body nut and Nyloc tail nut (supplied)
Key operations	3, 6, 9, 12 o'clock trapped and free key

**SMARTER  
LOCKING**



## TECHNICAL DRAWINGS



## ADDITIONAL PRODUCT IMAGES

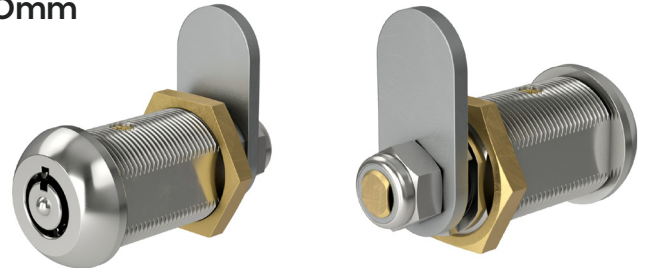
### 18mm



### 25mm



### 30mm



## KEY OPERATIONS



### Key movement: 1

Key starting position: 12 o'clock  
Key rotation: 90°  
Key ending position: 3 o'clock  
Key when unlocked: Trapped



### Key movement: 4

Key starting position: 12 o'clock  
Key rotation: 90°  
Key ending position: 9 o'clock  
Key when unlocked: Free



### Key movement: 9

Key starting position: 12 o'clock  
Key rotation: 360°  
Key ending position: 12 o'clock  
Key when unlocked: Up to four positions free



### Key movement: 2

Key starting position: 12 o'clock  
Key rotation: 90°  
Key ending position: 9 o'clock  
Key when unlocked: Trapped



### Key movement: 5

Key starting position: 12 o'clock  
Key rotation: 180°  
Key ending position: 6 o'clock  
Key when unlocked: Free



### Key movement: 3

Key starting position: 12 o'clock  
Key rotation: 90°  
Key ending position: 3 o'clock  
Key when unlocked: Free



### Key movement: 6

Key starting position: 12 o'clock  
Key rotation: 180°  
Key ending position: 6 o'clock  
Key when unlocked: Trapped