



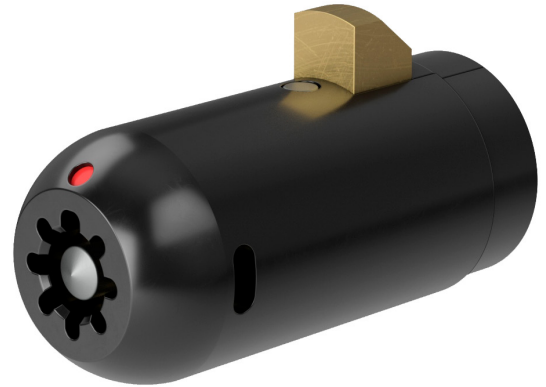
CAMLOCK
SYSTEMS

PRODUCT SPECIFICATION

Series 65 Locking Insert

SERIES 65

**HARDENED STEEL LOCKING INSERT
HOUSING OUR FLAGSHIP, PATENTED
AXIAL PIN TUMBLER MECHANISM.**



OVERVIEW

Anti-manipulation, key control, high security.

Camlock's flagship AXIAL pin tumbler mechanism utilised a series of single, flag-shaped pins that cannot be bumped into place, alongside a set of false gates that protect against picking. The Series 65's core is surrounded by anti-manipulation features.

Also available as a Cam Lock. Compatible with our range of Locking Hardware.

Product features

- o Stainless steel anti-drill pillar to deflect drilling
- o Additional anti-drill roller to protect the cam and latch
- o No shear line = bump resistant
- o Ideal for superior key control
- o Can cross suite with Series 63

TECHNICAL DATA

Number of key differs	over 5.7 million
Protective features	Anti-drill pillar, anti-drill roller, false gates
Mechanism	Axial
Body material	Hardened steel
Patent protection	Yes
Key registration	Compulsory
Cross suiting (within the Axial family)	Yes
Masterkeying	Yes
Key suite options	Keyed alike and keyed to differ
Body length	40.40mm
Key operations	Four options available

**SMARTER
LOCKING**

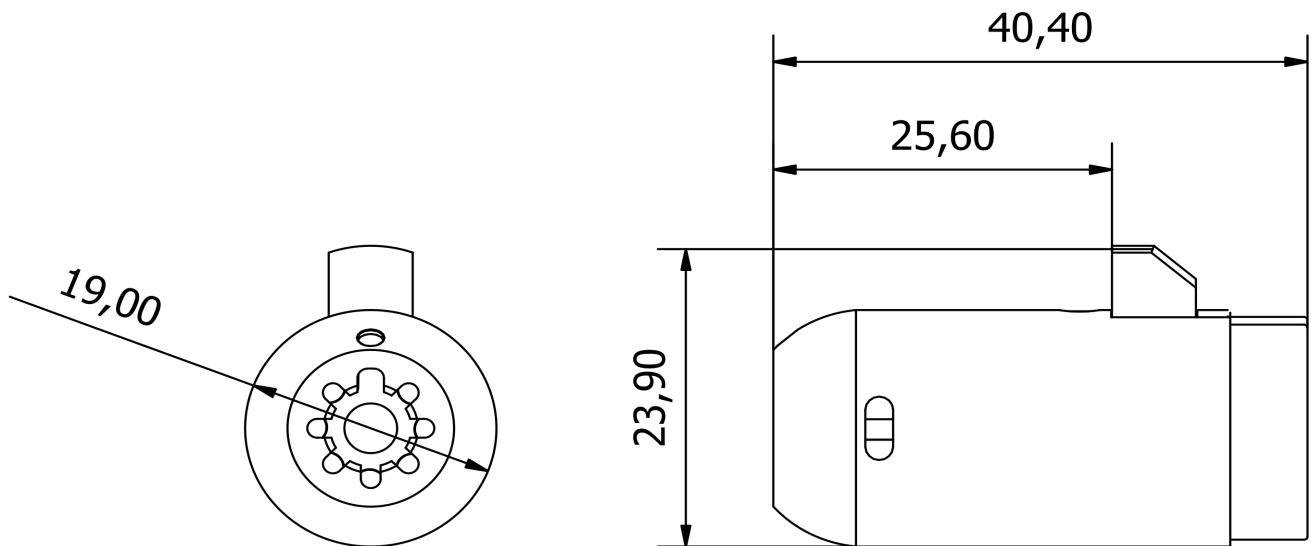


CAMLOCK
SYSTEMS

PRODUCT SPECIFICATION

Series 65 Locking Insert

TECHNICAL DRAWINGS



ADDITIONAL PRODUCT IMAGES

