



CAMACTIVE
WIRELESS ACCESS CONTROL SYSTEM

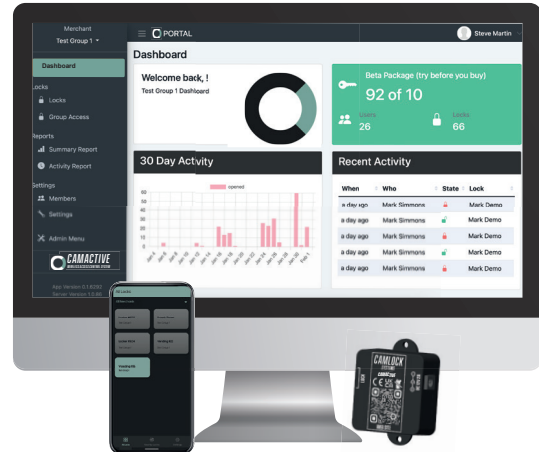
PRODUCT SPECIFICATION

CAMACTIVE

+44(O)1323 410996 | enquiries@camlock.com | www.camlock.com

CAMACTIVE

WIRELESS ACCESS CONTROL SYSTEM



OVERVIEW

Hardware

The CAMACTIVE is a data driven security system that allows users to access locks from a mobile device, logging the data associated with the locking system to provide invaluable information on the process.

App

iOS and Android compatible, the CAMACTIVE gives users datapoints detailing exactly when, where and by whom a machine is accessed.

Portal

User permissions can be granted and revoked and one time access can be provided if required, negating the need for mechanical keys. By monitoring access, the portal gathers data to form user specific reports.

TECHNICAL DATA

Dimensions	53.71mm x 49.91mm x 24mm
Power requirements	12V DC @ 2A
Materials	Polypropolene (casing) HASL lead free (PCB)
Finish	Black
Cycle testing	1,000,000 cycles
Operating temperatures	- 20°C to + 80°C
Fixing	2 x 5mm
Communication Protocols	Bluetooth
Encryption	Data Encryption - Proprietary end to end TLS 1.2 encryption with 128 bit AES keys on transport from mobile to server.
Audit Trail	Yes
Real Time Status Updates	Yes

**SMARTER
LOCKING**

**CAMLOCK
SYSTEMS**