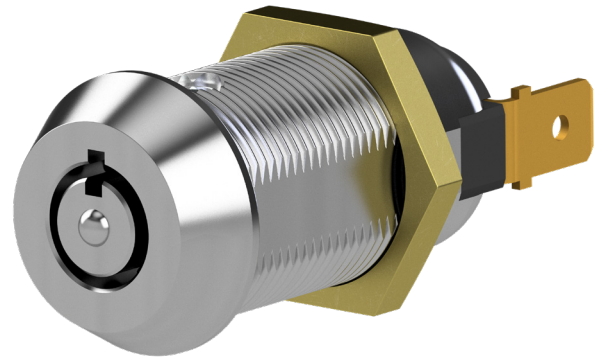




# SERIES 2D

## SINGLE POLE, 7 PIN, DIE CAST SWITCHLOCK



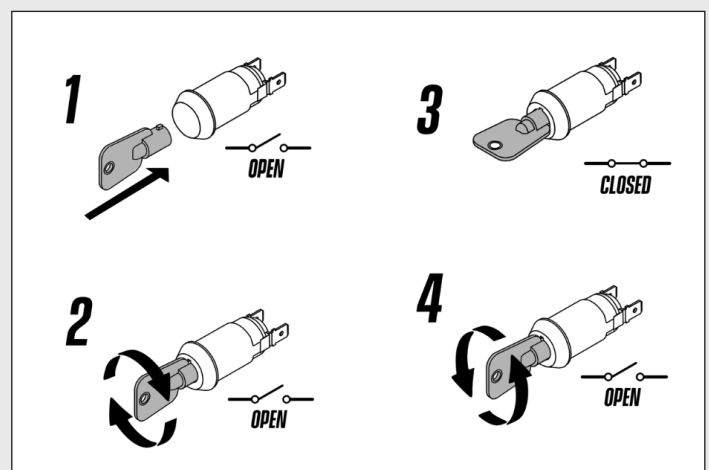
### OVERVIEW

The Series 2D switchlock combines a proven 7 pin radial pin tumbler mechanism with the cost benefits of a zinc alloy body.

This switchlock is suitable for applications where simple key controlled switching is required, with the added advantage of being able to form part of a wider keyed alike system using other conventional 7 pin radial pin tumbler items. The switch has a single pole off/on configuration

### TECHNICAL DATA

Operation types	N/O-C Key retained N/O-C Key removable Momentary N/O-C
Pick and manipulation resistance	Medium
Physical attack resistance	Medium
Key differs	500,000
Mechanism	Octagon
Material	Zinc alloy



**SMARTER  
LOCKING**