



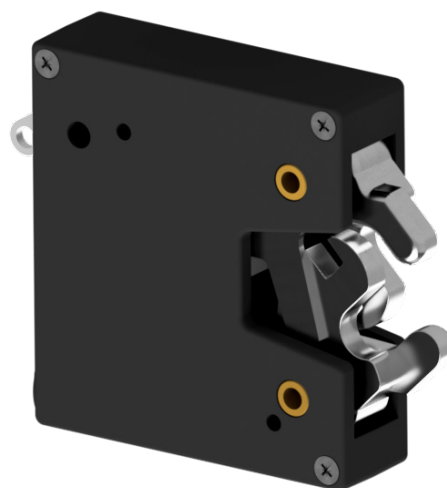
CAMLOCK
SYSTEMS

PRODUCT SPECIFICATION

Series 100

SERIES 100

ELECTRONIC ROTARY LATCH



OVERVIEW

The Series 100 is a high-security latch ideal for heavy usage. This unique rotary latch offers a tamper-resistant, electronic locking solution. With its patented design, the dual locking jaws utilise the compression strength of steel to prevent forced unlocking.

The Series 100 offers the same strength with additional features such as built in door monitoring and improved latch monitoring. The Series 100 now utilises micro switches for more accuracy and reliability.

TECHNICAL DATA

Lock monitoring	Built-in monitoring switch indicating if latch is locked or unlocked
Door monitoring	Built-in door monitoring
Jaws	Two symmetrical stainless steel jaws
Jaw operation	Synchronised operation to prevent only one jaw closing
Materials	Glass-reinforced, flame resistant plastic housing. Stainless steel jaws
Finish	Smooth black finish
Mechanical override	Yes - fitted with release lever
Patented	International patent applied for
CE Tested	Yes
Cycle testing	100,000+ cycles TBC
Forced opening	Withstands 7,000 N of force
Contact rating	1 amp @ 200 V DC TBC
Operating temperatures	-40°C to +65°C
Maximum pre-load on latch	300 N
Fixing	2 x 5mm fixing as standard and optional 3rd fixing

**SMARTER
LOCKING**



CAMLOCK
SYSTEMS

PRODUCT SPECIFICATION

Series 100

TECHNICAL DRAWINGS

